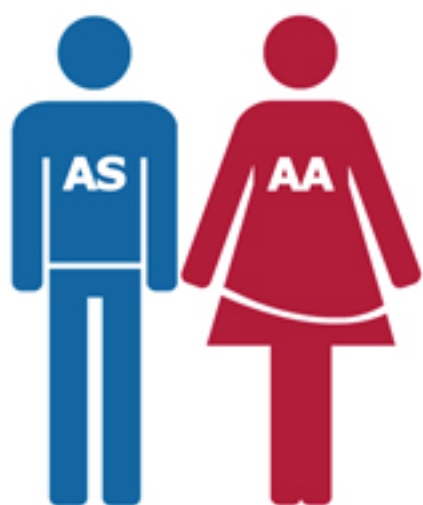


UNDERSTANDING the family ties

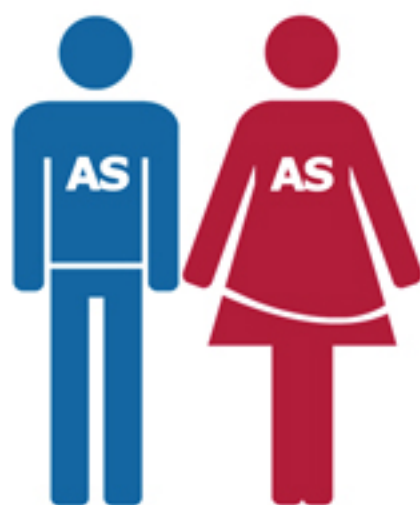
When 1 parent has SCT (AS).



1 in 2 (50%) that each baby will have regular hemoglobin (AA).

1 in 2 (50%) that each baby will have Sickle Cell Trait (AS).

When both parents have SCT (AS).

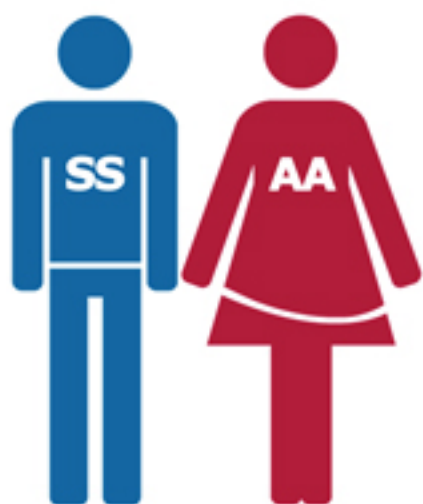


1 in 4 (25%) that each baby's hemoglobin will be regular (AA).

2 in 4 (50%) that each baby will have SCT (AS).

1 in 4 (25%) that each baby will have SCD (SS).

When 1 parent has SCD (SS).



All the children will have SCT (AS).

When 1 parent has SCT (AS) and the other has SCD (SS).

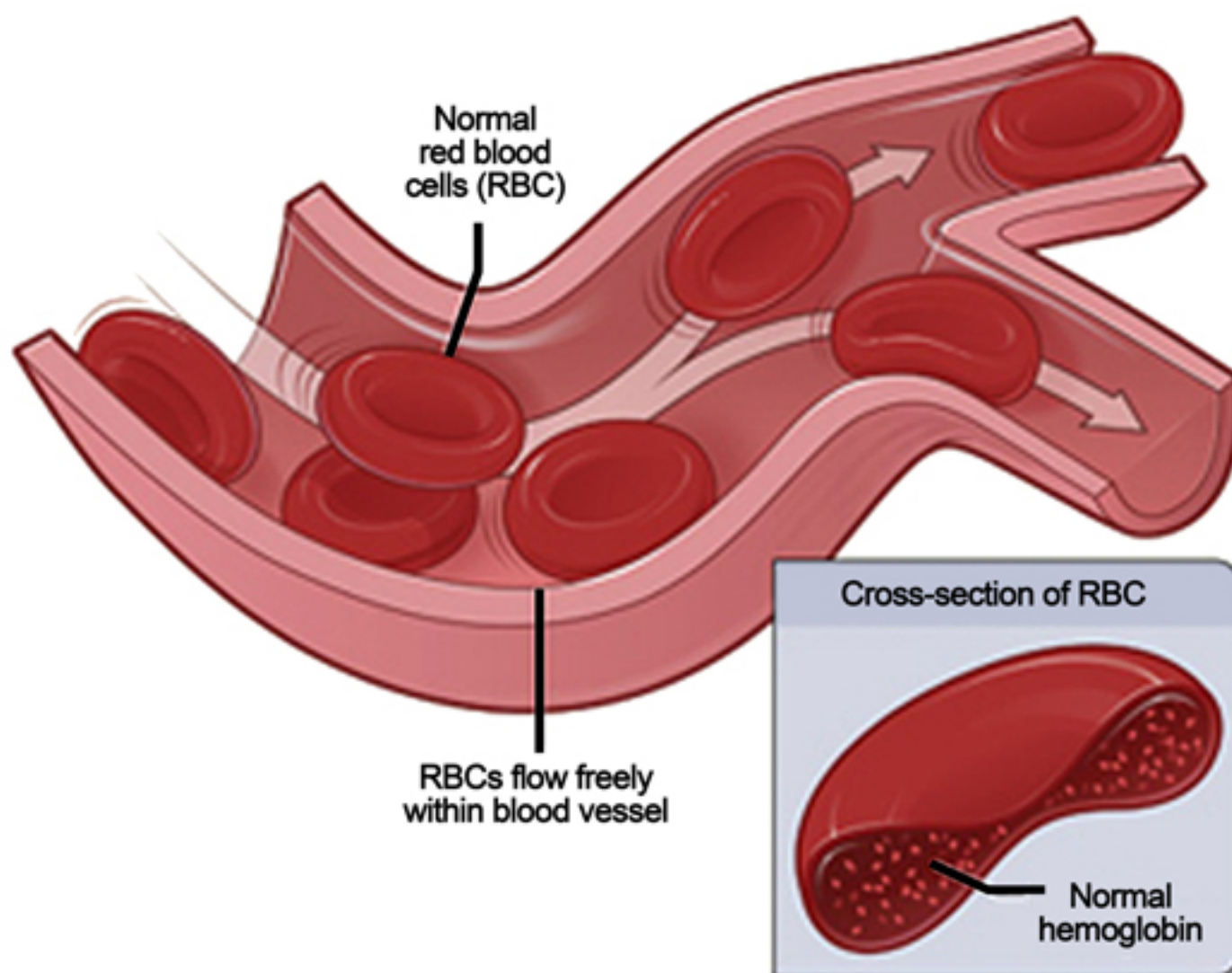


1 in 2 (50%) that each baby will have SCT (AS).

1 in 2 (50%) that each baby will have SCD (SS).



A Normal red blood cells



B Abnormal, sickled, red blood cells (sickle cells)

